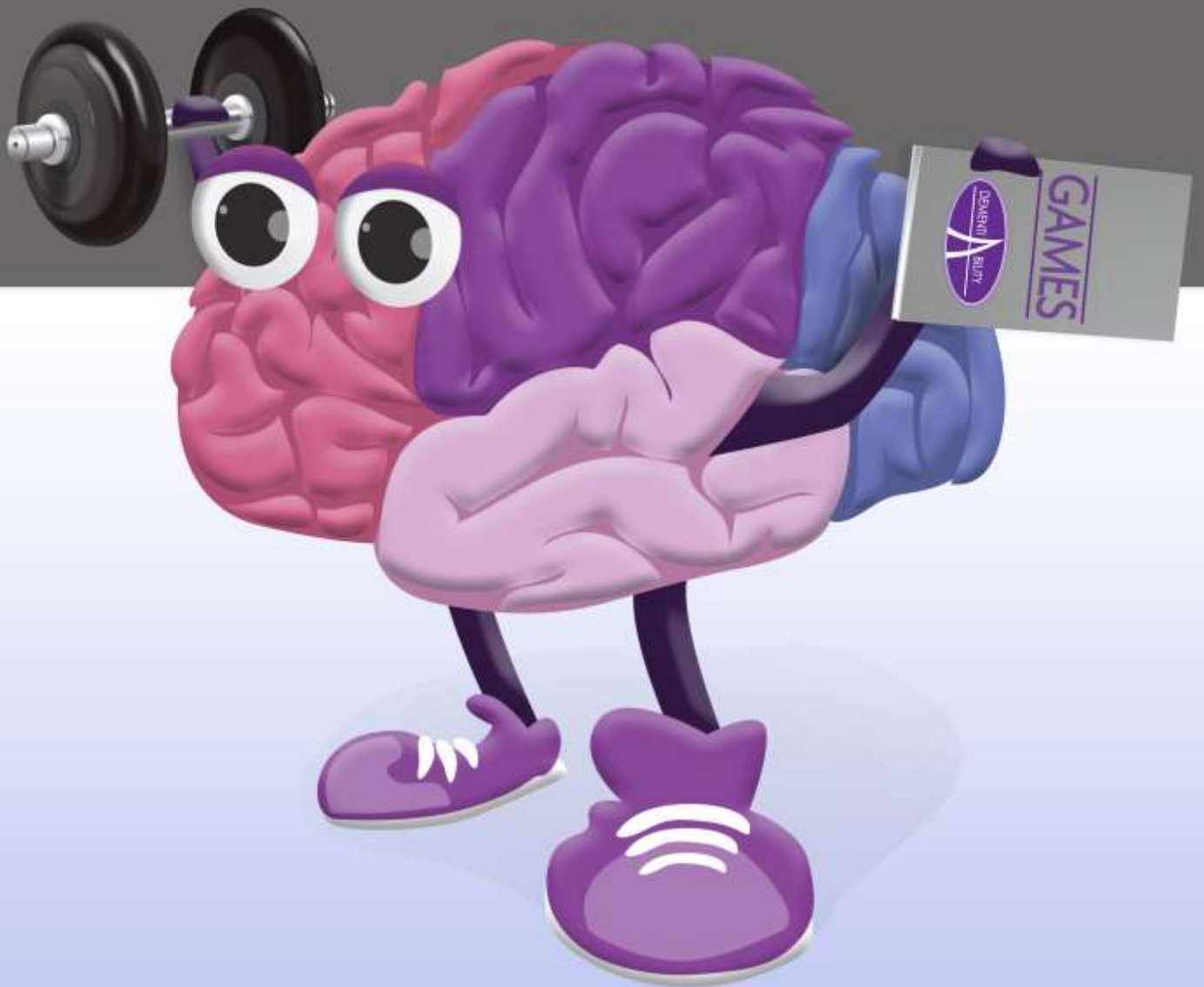


SPELLING QUEST

# The Work It Series

SHAPING THE NEUROPLASTIC COGNITIVELY IMPAIRED BRAIN



GAMES FOR COGNITIVE STIMULATION

## About This Book

The 'Work It' series has been created to provide opportunities for people with dementia to stimulate their brains. In other words, let's 'work it!' Much of the decline that we see in dementia arises due to disuse. Research on the neuroplasticity of the brain, and on excess disability, clearly indicates that cognitive capacity can be enhanced when the brain is stimulated. Using DementiAbility Methods: The Montessori Way™, the emphasis is placed on presenting the activity to a person at his or her level of ability. The spelling quests in this book are presented with Level 1 being the easiest and the level of difficulty increasing in Level 2. The answer key is presented on the page that follows each spelling quest.

This book provides just one set of games in our 'Work It' series. Be sure to check out our other titles including TRIVIA QUESTIONS and WORD SEARCHES. We also have the 'Carry on Reading' series, which are books that have been created in large print for people with dementia.



Work it and have fun!

Sincerely,

Gail Elliot

Series Editor: Gail Elliot, Gerontologist and Dementia Specialist  
DementiAbility Enterprises Inc. © 2012

ISBN: 978-0-9918467-1-9

Published by: DementiAbility Enterprises Inc., Oakville, ON  
[www.dementiability.com](http://www.dementiability.com)

## Topic: Circus

Level 1 - Circle the correct spelling of each circus-related word.

- |                 |             |
|-----------------|-------------|
| 1. Elephant     | Elefant     |
| 2. Tight rope   | Tite rope   |
| 3. Tentt        | Tent        |
| 4. Lion         | Lien        |
| 5. Clowne       | Clown       |
| 6. Balloons     | Ballewns    |
| 7. Fase Paint   | Face Paint  |
| 8. Caustume     | Costume     |
| 9. Jugalerr     | Juggler     |
| 10. Tripeaze    | Trapeze     |
| 11. Popcorn     | Popkorne    |
| 12. Parformanse | Performance |

# **Topic: Circus**

Answer key

1. Elephant
2. Tight rope
3. Tent
4. Lion
5. Clown
6. Balloons
7. Face Paint
8. Costume
9. Juggler
10. Trapeze
11. Popcorn
12. Performance

## Topic: Neighborhood

Level 1 - Circle the correct spelling of each neighborhood-related word.

- |              |           |
|--------------|-----------|
| 1. Scool     | School    |
| 2. Park      | Parck     |
| 3. Mailbox   | Mailbocks |
| 4. Friends   | Frendz    |
| 5. Bike      | Beyke     |
| 6. Lowne     | Lawn      |
| 7. Yarrd     | Yard      |
| 8. Chalk     | Chawke    |
| 9. Fence     | Fencce    |
| 10. Walk     | Waek      |
| 11. Familees | Families  |
| 12. Paritie  | Party     |

# **Topic: Neighborhood**

## *Answer Key*

1. School
2. Park
3. Mailbox
4. Friends
5. Bike
6. Lawn
7. Yard
8. Chalk
9. Fence
10. Walk
11. Families
12. Party

## Topic: Nature

Level 1 - Circle the correct spelling of each nature-related word.

- |                |             |
|----------------|-------------|
| 1. Woterr      | Water       |
| 2. Butterfly   | Budderflie  |
| 3. Lylack      | Lilac       |
| 4. Hurrycain   | Hurricane   |
| 5. Caterpillar | Katerpillir |
| 6. Erthwarm    | Earthworm   |
| 7. Litenning   | Lightning   |
| 8. Sliparry    | Slippery    |
| 9. Snoflaik    | Snowflake   |
| 10. Maple      | Maipell     |
| 11. Trout      | Troet       |
| 12. Cloud      | Clowde      |

## **Topic: Nature**

### Answer Key

1. Water
2. Butterfly
3. Lilac
4. Hurricane
5. Caterpillar
6. Earthworm
7. Lightning
8. Slippery
9. Snowflake
10. Maple
11. Trout
12. Cloud



## Topic: Bedtime

Level 1 - Circle the correct spelling of each bedtime-related word.

- |               |            |
|---------------|------------|
| 1. Toothbrush | Tothbrusch |
| 2. Prayir     | Prayer     |
| 3. Nightgown  | Nightgowen |
| 4. Alarm      | Alarem     |
| 5. Lite       | Light      |
| 6. Tea        | Tee        |
| 7. Novel      | Nawvel     |
| 8. Dreams     | Dreems     |
| 9. Faisecloth | Facecloth  |
| 10. Towel     | Toel       |
| 11. Slipersss | Slippers   |
| 12. Housekoat | Housecoat  |

## **Topic: Bedtime**

### Answer Key

1. Toothbrush
2. Prayer
3. Nightgown
4. Alarm
5. Light
6. Tea
7. Novel
8. Dreams
9. Facecloth
10. Towel
11. Slippers
12. Housecoat

## Topic: Chores

Level 1 - Circle the correct spelling of each chore-related word listed below.

- |               |            |
|---------------|------------|
| 1. Cleaning   | Cleening   |
| 2. Soreting   | Sorting    |
| 3. Billding   | Building   |
| 4. Baicking   | Baking     |
| 5. Lawndry    | Laundry    |
| 6. Painting   | Pannting   |
| 7. Skrubbing  | Scrubbing  |
| 8. Dusting    | Dusteing   |
| 9. Sweeping   | Sweping    |
| 10. Polishing | Polishhing |
| 11. Detailing | Detayling  |
| 12. Vacuuming | Vakuming   |

# **Topic: Chores**

## Answer Key

1. Cleaning
2. Sorting
3. Building
4. Baking
5. Laundry
6. Painting
7. Scrubbing
8. Dusting
9. Sweeping
10. Polishing
11. Detailing
12. Vacuuming

## Topic: Outer Space

Level 1 - Circle the correct spelling of each space-related word listed below.

- |               |           |
|---------------|-----------|
| 1. Twinkle    | Twinckel  |
| 2. Venus      | Veenis    |
| 3. Satalyte   | Satellite |
| 4. Plannitt   | Planet    |
| 5. Moon       | Mewn      |
| 6. Astornomie | Astronomy |
| 7. Pluto      | Plootoe   |
| 8. Saturn     | Saternne  |
| 9. Telicskope | Telescope |
| 10. Lunar     | Loonar    |
| 11. Joopitar  | Jupiter   |
| 12. Elclypse  | Eclipse   |

# **Topic: Outer Space**

## Answer Key

1. Twinkle
2. Venus
3. Satellite
4. Planet
5. Moon
6. Astronomy
7. Pluto
8. Saturn
9. Telescope
10. Lunar
11. Jupiter
12. Eclipse

## Topic: Travel

Level 1 - Circle the correct spelling of each travel-related word listed below.

- |               |            |
|---------------|------------|
| 1. Hotel      | Hoetel     |
| 2. Suitcase   | Suitekase  |
| 3. Paspart    | Passport   |
| 4. Aereplain  | Airplane   |
| 5. Ticket     | Tikit      |
| 6. Sunshine   | Sunschine  |
| 7. Cuntrie    | Country    |
| 8. Forin      | Foreign    |
| 9. Vacation   | Vaycashun  |
| 10. Guide     | Giyde      |
| 11. Explore   | Eksplore   |
| 12. Adventure | Adventiour |

# **Topic: Travel**

## Answer Key

1. Hotel
2. Suitcase
3. Passport
4. Airplane
5. Ticket
6. Sunshine
7. Country
8. Foreign
9. Vacation
10. Guide
11. Explore
12. Adventure



## Topic: Hobbies

Level 1 - Circle the correct spelling of each hobby-related word listed below.

- |             |          |
|-------------|----------|
| 1. Sew      | Sowe     |
| 2. Cards    | Kardds   |
| 3. Fische   | Fish     |
| 4. Rede     | Read     |
| 5. Nitting  | Knitting |
| 6. Skee     | Ski      |
| 7. Paint    | Paent    |
| 8. Hunt     | Huent    |
| 9. Bake     | Baeke    |
| 10. Collect | Culect   |
| 11. Stamp   | Stampe   |
| 12. Desyne  | Design   |

# **Topic: Hobbies**

## Answer Key

1. Sew
2. Cards
3. Fish
4. Read
5. Knitting
6. Ski
7. Paint
8. Hunt
9. Bake
10. Collect
11. Stamp
12. Design

## Topic: Sunday Dinner

Level 1 - Circle the correct spelling of each dinner-related word listed below.

- |               |             |
|---------------|-------------|
| 1. Roest Beef | Roast Beef  |
| 2. Putting    | Pudding     |
| 3. Graivee    | Gravy       |
| 4. Pickle     | Piccle      |
| 5. Putatto    | Potato      |
| 6. Asparagus  | Assparigiss |
| 7. Brawcoli   | Broccoli    |
| 8. Chokolat   | Chocolate   |
| 9. Sallid     | Salad       |
| 10. Famlie    | Family      |
| 11. Table     | Taibel      |
| 12. Dishes    | Dishis      |

# **Topic: Sunday Dinner**

Answer key

1. Roast Beef
2. Pudding
3. Gravy
4. Pickle
5. Potato
6. Asparagus
7. Broccoli
8. Chocolate
9. Salad
10. Family
11. Table
12. Dishes

## Topic: Things to do

Level 1 - Circle the correct spelling of each 'thing to do' in the list below.

- |                       |                    |
|-----------------------|--------------------|
| 1. By Groshries       | Buy Groceries      |
| 2. Visit Doctor       | Visut Docter       |
| 3. Change Oil         | Chainge Oyle       |
| 4. Telihpone a Friend | Telephone a Friend |
| 5. Renew License      | Reniew Lisense     |
| 6. Water Garden       | Woter Garten       |
| 7. Do Homwerk         | Do Homework        |
| 8. Play Painoe        | Play Piano         |
| 9. Get Harecut        | Get Haircut        |
| 10. Take a Shower     | Take a Shauwir     |
| 11. Rennovaite        | Renovate           |
| 12. Entertain         | Enteretain         |

## **Topic: Things to do**

### Answer Key

1. Buy Groceries
2. Visit Doctor
3. Change Oil
4. Telephone a Friend
5. Renew License
6. Water Garden
7. Do Homework
8. Play Piano
9. Get Haircut
10. Take a Shower
11. Renovate
12. Entertain

## Topic: Breakfast

Level 2 - Circle the correct spelling of each breakfast-related food.

- |               |           |           |
|---------------|-----------|-----------|
| 1. Cereal     | Seriell   | Cerial    |
| 2. Oringe     | Orange    | Orenge    |
| 3. Egs        | Eggs      | Eegs      |
| 4. Toest      | Toost     | Toast     |
| 5. Cofee      | Coffee    | Cawfee    |
| 6. Butter     | Budder    | Buterr    |
| 7. Oatmal     | Oatmeale  | Oatmeal   |
| 8. Yogurt     | Yogert    | Yogirt    |
| 9. Hunny      | Honey     | Honee     |
| 10. Peanut    | Paenut    | Peenut    |
| 11. Rassbarry | Razzberry | Raspberry |
| 12. Banana    | Bananna   | Bannana   |

# **Topic: Breakfast**

## Answer Key

1. Cereal
2. Orange
3. Eggs
4. Toast
5. Coffee
6. Butter
7. Oatmeal
8. Yogurt
9. Honey
10. Peanut
11. Raspberry
12. Banana



## Topic: Jobs

Level 2 - Circle the correct spelling of each job title.

- |                |             |              |
|----------------|-------------|--------------|
| 1. Vetrinarian | Vetrinaran  | Veterinarian |
| 2. Ecsecutive  | Executive   | Egsecutive   |
| 3. Maleman     | Mailman     | Maelman      |
| 4. Cheff       | Shef        | Chef         |
| 5. Museician   | Musician    | Mewsician    |
| 6. Baker       | Bekar       | Baicker      |
| 7. Hairdresser | Haredresser | Hairdreser   |
| 8. Pruduser    | Producer    | Prooducer    |
| 9. Claener     | Cleaner     | Cleener      |
| 10. Janitir    | Janitor     | Janiter      |
| 11. Mecanic    | Mechanic    | Mekanic      |
| 12. Server     | Servir      | Sirver       |

## **Topic: Jobs**

### Answer Key

1. Veterinarian
2. Executive
3. Mailman
4. Chef
5. Musician
6. Baker
7. Hairdresser
8. Producer
9. Cleaner
10. Janitor
11. Mechanic
12. Server

## Topic: Craft Box

Level 2 - Circle the correct spelling of each craft-related item.

- |                |            |            |
|----------------|------------|------------|
| 1. Gleu        | Glue       | Gluu       |
| 2. Beids       | Beeds      | Beads      |
| 3. Scissors    | Sissors    | Scizzors   |
| 4. String      | Sttring    | String     |
| 5. Paint       | Paent      | Piant      |
| 6. Crayons     | Krayons    | Crayonz    |
| 7. Snadpaper   | Sandpaper  | Sanndpaper |
| 8. Culores     | Colours    | Coloers    |
| 9. Wood Blocks | Wood Blox  | Woud Blcks |
| 10. Sparkcles  | Sparkles   | Sparkkles  |
| 11. Gloo Stick | Glue Stick | Glue Stikk |
| 12. Patterns   | Padderns   | Paterrns   |

# **Topic: Craft Box**

## Answer Key

1. Glue
2. Beads
3. Scissors
4. String
5. Paint
6. Crayons
7. Sandpaper
8. Colours
9. Wood Blocks
10. Sparkles
11. Glue Stick
12. Patterns

## Topic: Gone Fishing!

Level 2 - Circle the correct spelling of each fishing-related word.

- |                 |             |             |
|-----------------|-------------|-------------|
| 1. Hock         | Hook        | Hoke        |
| 2. Bayte        | Bait        | Baote       |
| 3. Boat         | Bote        | Boet        |
| 4. Taccle       | Tackle      | Takkle      |
| 5. Sunfissh     | Sonfish     | Sunfish     |
| 6. Motor        | Moater      | Motar       |
| 7. Satl Water   | Salt Water  | Sallt Water |
| 8. Fresh Watter | Fresh Water | Fresh Watir |
| 9. Lure         | Loore       | Loer        |
| 10. Baiss       | Bas         | Bass        |
| 11. Dynner      | Dinnir      | Dinner      |
| 12. Catch       | Katch       | Catche      |

# **Topic: Gone Fishing!**

## Answer Key

1. Hook
2. Bait
3. Boat
4. Tackle
5. Sunfish
6. Motor
7. Salt Water
8. Fresh Water
9. Lure
10. Bass
11. Dinner
12. Catch

## Topic: Things to Read

Level 2 - Circle the correct spelling of each reading-related word.

- |                 |               |               |
|-----------------|---------------|---------------|
| 1. Newspaper    | Newspapir     | Noospaper     |
| 2. Intirnett    | Internet      | Inturnet      |
| 3. Romanse      | Rowmance      | Romance       |
| 4. Sience       | Scianse       | Science       |
| 5. Kookbook     | Cookbook      | Cokbook       |
| 6. Educational  | Educashional  | Edukational   |
| 7. Horticulture | Howrticulture | Horeticulture |
| 8. Nutrition    | Newtrition    | Nootrititon   |
| 9. Physics      | Fisics        | Phisecs       |
| 10. Teknology   | Tecknology    | Technology    |
| 11. Crime       | Krime         | Chryme        |
| 12. Asttrology  | Astroligy     | Astrology     |

# **Topic: Things to Read**

## *Answer Key*

1. Newspaper
2. Internet
3. Romance
4. Science
5. Cookbook
6. Educational
7. Horticulture
8. Nutrition
9. Physics
10. Technology
11. Crime
12. Astrology



## Topic: First Day of School

Level 2 - Circle the correct spelling of each school-related word.

- |                |             |             |
|----------------|-------------|-------------|
| 1. Taecher     | Teecher     | Teacher     |
| 2. Studant     | Student     | Stewdent    |
| 3. Homewoork   | Homeworck   | Homework    |
| 4. Apple       | Appel       | Apill       |
| 5. Charpner    | Sharpener   | Sharppener  |
| 6. Recess      | Receiss     | Reeces      |
| 7. Lunchbox    | Lunshbox    | Lunchbocks  |
| 8. Hisstory    | Historie    | History     |
| 9. Geographie  | Geography   | Giograghy   |
| 10. Engliash   | Enlgish     | English     |
| 11. Fernch     | French      | Friench     |
| 12. Mathematis | Mathmaticks | Mathematics |

# **Topic: First Day of School**

## *Answer Key*

1. Teacher
2. Student
3. Homework
4. Apple
5. Sharpener
6. Recess
7. Lunchbox
8. History
9. Geography
10. English
11. French
12. Mathematics

## Topic: Colours

Level 2 - Circle the correct spelling of each colour.

- |                |           |           |
|----------------|-----------|-----------|
| 1. Fuchsia     | Fewsha    | Fuscai    |
| 2. Marune      | Maroon    | Marone    |
| 3. Burgundy    | Burgnudy  | Burgunde  |
| 4. Tope        | Toape     | Taupe     |
| 5. Pureple     | Purple    | Purrpule  |
| 6. Gereen      | Green     | Grean     |
| 7. Orange      | Oarange   | Orenge    |
| 8. Pinnk       | Pink      | Pinck     |
| 9. Aqua        | Awqua     | Owkwa     |
| 10. Rows       | Rose      | Rowse     |
| 11. Chocollate | Chicolate | Chocolate |
| 12. Peich      | Peach     | Peeche    |

# Topic: Colours

## Answer Key

1. Fuchsia
2. Maroon
3. Burgundy
4. Taupe
5. Purple
6. Green
7. Orange
8. Pink
9. Aqua
10. Rose
11. Chocolate
12. Peach

## Topic: In the Tool Box

Level 2 - Circle the correct spelling of each tool-related word.

- |                |             |             |
|----------------|-------------|-------------|
| 1. Chiansaw    | Chaynsaw    | Chainsaw    |
| 2. Wrench      | Wreinch     | Wrennch     |
| 3. Hoammer     | Hammer      | Hamre       |
| 4. Dryll       | Drill       | Driel       |
| 5. Level       | Levill      | Lievel      |
| 6. Screwdriver | Secrwdriver | Screwdirver |
| 7. Pliers      | Plyrs       | Pliiers     |
| 8. Nael        | Nale        | Nail        |
| 9. Saew        | Sawe        | Saw         |
| 10. Volatage   | Voltage     | Voletaige   |
| 11. Maesrue    | Mesure      | Measure     |
| 12. Drill Bit  | Dril Bit    | Dryll Bite  |

# **Topic: In the Tool Box**

## Answer Key

1. Chainsaw
2. Wrench
3. Hammer
4. Drill
5. Level
6. Screwdriver
7. Pliers
8. Nail
9. Saw
10. Voltage
11. Measure
12. Drill Bit

## Topic: Family Members

Level 2 - Circle the correct spelling of each family-related word.

- |               |           |           |
|---------------|-----------|-----------|
| 1. Daughter   | Dawter    | Dauegther |
| 2. Grandusn   | Grandsunn | Grandson  |
| 3. Nefew      | Neffew    | Nephew    |
| 4. Neese      | Neice     | Niese     |
| 5. Baebe      | Baby      | Baeybe    |
| 6. Cousin     | Cuzin     | Couesin   |
| 7. Borther    | Brother   | Broter    |
| 8. Adption    | Adoption  | Adpotion  |
| 9. Twin       | Twynn     | Tuin      |
| 10. Related   | Realated  | Ralated   |
| 11. Sisster   | Sistir    | Sister    |
| 12. Triplette | Triplitt  | Triplet   |

## **Topic: Family Members**

### Answer Key

1. Daughter
2. Grandson
3. Nephew
4. Neice
5. Baby
6. Cousin
7. Brother
8. Adoption
9. Twin
10. Related
11. Sister
12. Triplet



## Topic: Toppings on a Pizza

Level 2 - Circle the correct spelling of each pizza-related food.

- |               |           |           |
|---------------|-----------|-----------|
| 1. Mushroom   | Moshrum   | Mushrome  |
| 2. Cheease    | Cheese    | Chiese    |
| 3. Tomate     | Tomato    | Tomatow   |
| 4. Dogh       | Dough     | Dooe      |
| 5. Peppuroni  | Pepperion | Pepperoni |
| 6. Sosage     | Sausage   | Sacage    |
| 7. Peppur     | Pepper    | Peperr    |
| 8. Crust      | Crusst    | Krust     |
| 9. Pineiapple | Pineaple  | Pineapple |
| 10. Hamme     | Ham       | Hame      |
| 11. Chickean  | Chicken   | Chikken   |
| 12. Chili     | Chilly    | Chillie   |

# **Topic: Toppings on a Pizza**

## Answer Key

1. Mushroom
2. Cheese
3. Tomato
4. Dough
5. Pepperoni
6. Sausage
7. Pepper
8. Crust
9. Pineapple
10. Ham
11. Chicken
12. Chili



The  
Work It Series

**Order more copies at:**

[www.dementiability.com](http://www.dementiability.com)